

# LIGIER JF4 SERIES

## 2024 STYLE GUIDE

VERSION 2 - APRIL 4, 2024



The following slides outline the specifications for all logo identification that each team and its drivers are required to follow during the 2024 Ligier JS F4 Series season. The specifications include logo type, location, and size for the designated spaces. This document covers the Series, partner, and sponsors logos for the season. Updates may be made via Competitor Advisory Memos during the season.

Teams should not produce official partner logos, series logos, or numbers for their cars. All teams will receive one (1) vehicle kit with their vehicle registration. This vehicle kit includes all required Series and partner/sponsor logo decals. Additional kits and individual assets will be available for purchase at each event.

Teams are allowed to wrap/paint their vehicles, but they are required to follow all usage guides provided by the Series and partners/sponsors. All liveries require approval.

All drivers will receive one (1) suit kit with their driver registration. This suit kit includes all required Series and partner/sponsor logo patches. Drivers are free to have their suits embroidered or screenprinted in lieu of using these patches, but must follow the patch diagram outlined in this style guide. Any provided suit kits are not to be used for crew uniforms without prior approval and purchase.

Car liveries, suit layouts, and any questions regarding logo placement, decals, patches or assets should be sent to Ashleigh Aungst: [ashleigh@a2bstrategiesllc.com](mailto:ashleigh@a2bstrategiesllc.com)

[All assets and logo usage guides can be downloaded by clicking here.](#)

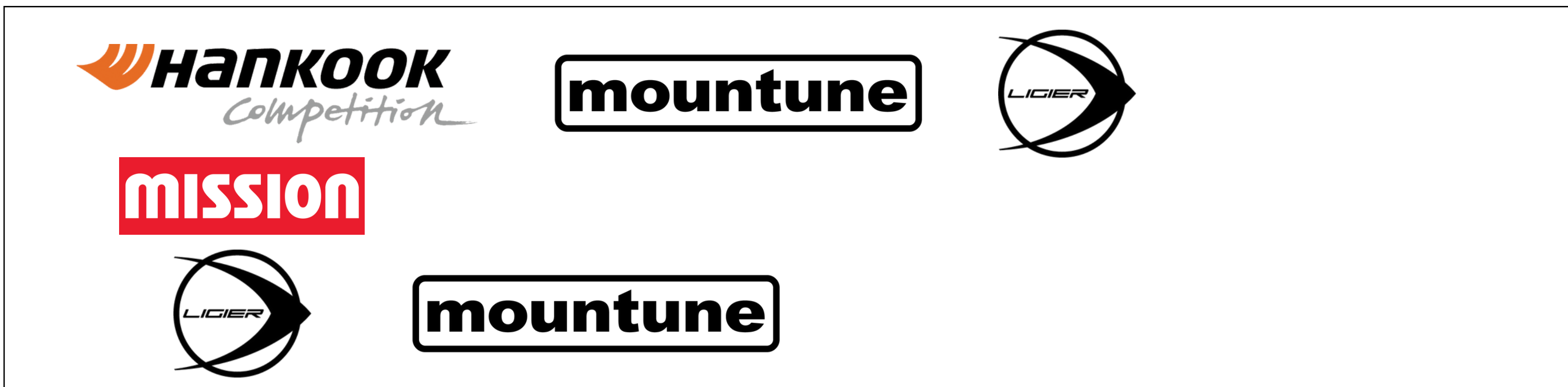
Each of our partners/sponsors have their own usage guides for their logos. For your reference, you can download them individually by clicking the links below, if applicable.

[All assets and logo usage guides can be downloaded by clicking here.](#)

- [Ligier JS F4 Series](#)
- [Hankook Tires](#)
- [Ligier Automotive](#)
- Bell Helmets
- [OMP Racing](#)
- Hagerty
- [Mission Foods](#)
- MK Technologies
- Omologato
- Radford Racing School
- [Sunoco Race Fuels](#)

The following partner/sponsor logos are listed by location on the next couple of pages. For all logos, please provide a solid background for the area where the logo is to be placed unless prior approval has been received by Series officials. Graphic layouts for decal placement on the cars will follow these charts. As a reminder, teams should not produce official partner logos, series logos, or numbers for their cars.

NOSE & FRONT  
CHASSIS



WINGS



The following partner/sponsor logos are listed by location on the next couple of pages. For all logos, please provide a solid background for the area where the logo is to be placed unless prior approval has been received by Series officials. Graphic layouts for decal placement on the cars will follow these charts. As a reminder, teams should not produce official partner logos, series logos, or numbers for their cars.

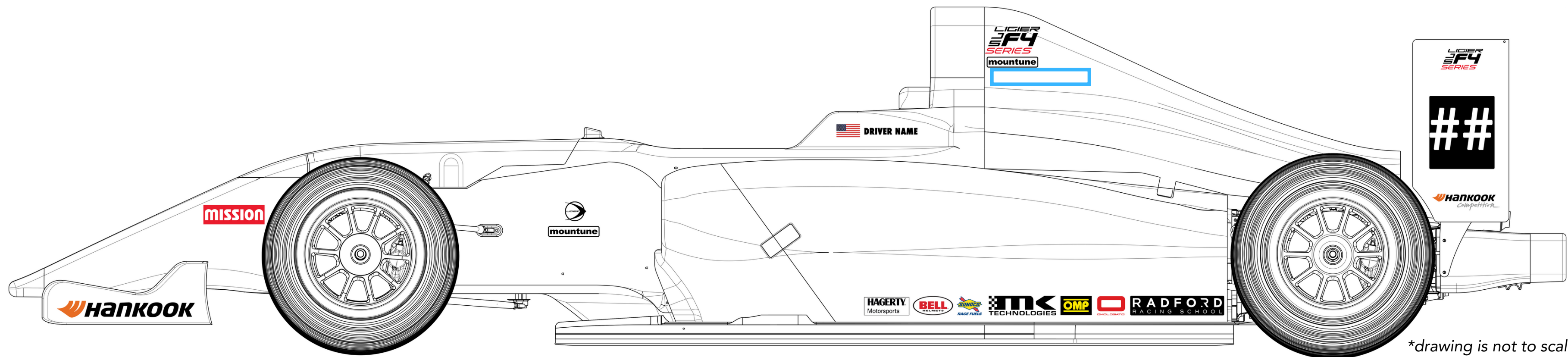
LOWER  
CHASSIS



UPPER  
CHASSIS



additional space reserved for future title sponsor(s)



## FRONT WING

Long Hankook decal should be centered.

## FRONT CHASSIS

Top of decal sheet should be 7" down from the top of the chassis.

## ENGINE COVER

Large JS F4 logo should be 1" down from the top (profile, not curved over), with Mountune stacked underneath.

## COCKPIT SIDE

Home country flag to the left of name. Single color font without outline or shadow.

## REAR WING

Small JS F4 logo should be in alignment with the wing plane, positioned 1" below the top.

Short Hankook logo should be positioned 1" above the bottom of the wing.

## SIDE NOSE

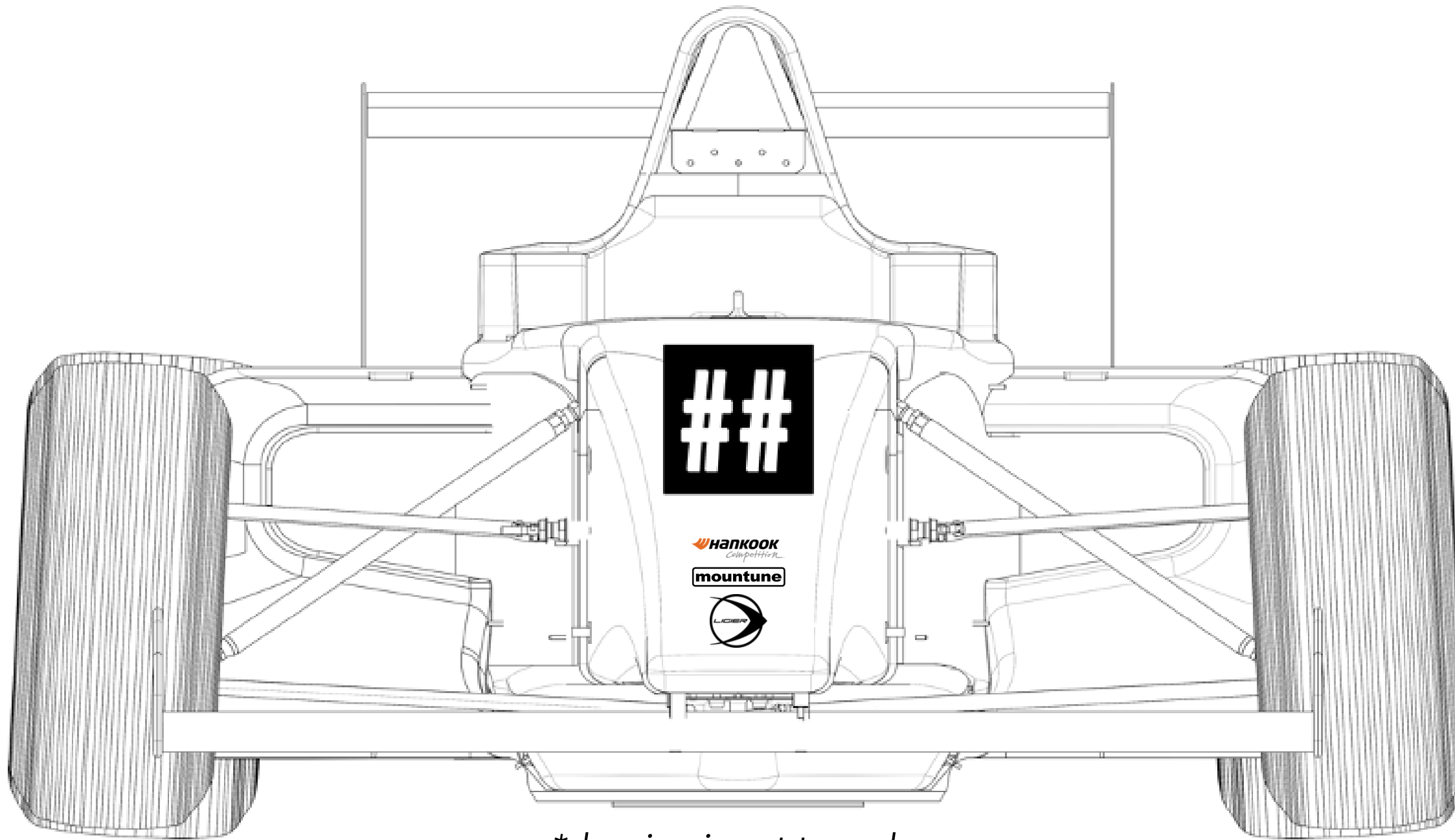
Logos should not be blocked by wheel or wing.

Below, a 4" tall by 20" wide space should be reserved for a future title sponsor.

## SIDEPOD RIBBON

All decals will be 2" tall. Bottom of decal should be 2" above the undertray. Group decals together in an organized fashion, in the order shown above.

A 9" square optional number plate should be in contrast with the wing color, positioned 8" down from the top of the wing. Numbers must be at least 8.25" tall, bold in font and in a high-contrast color, centered on the plate or in the middle.



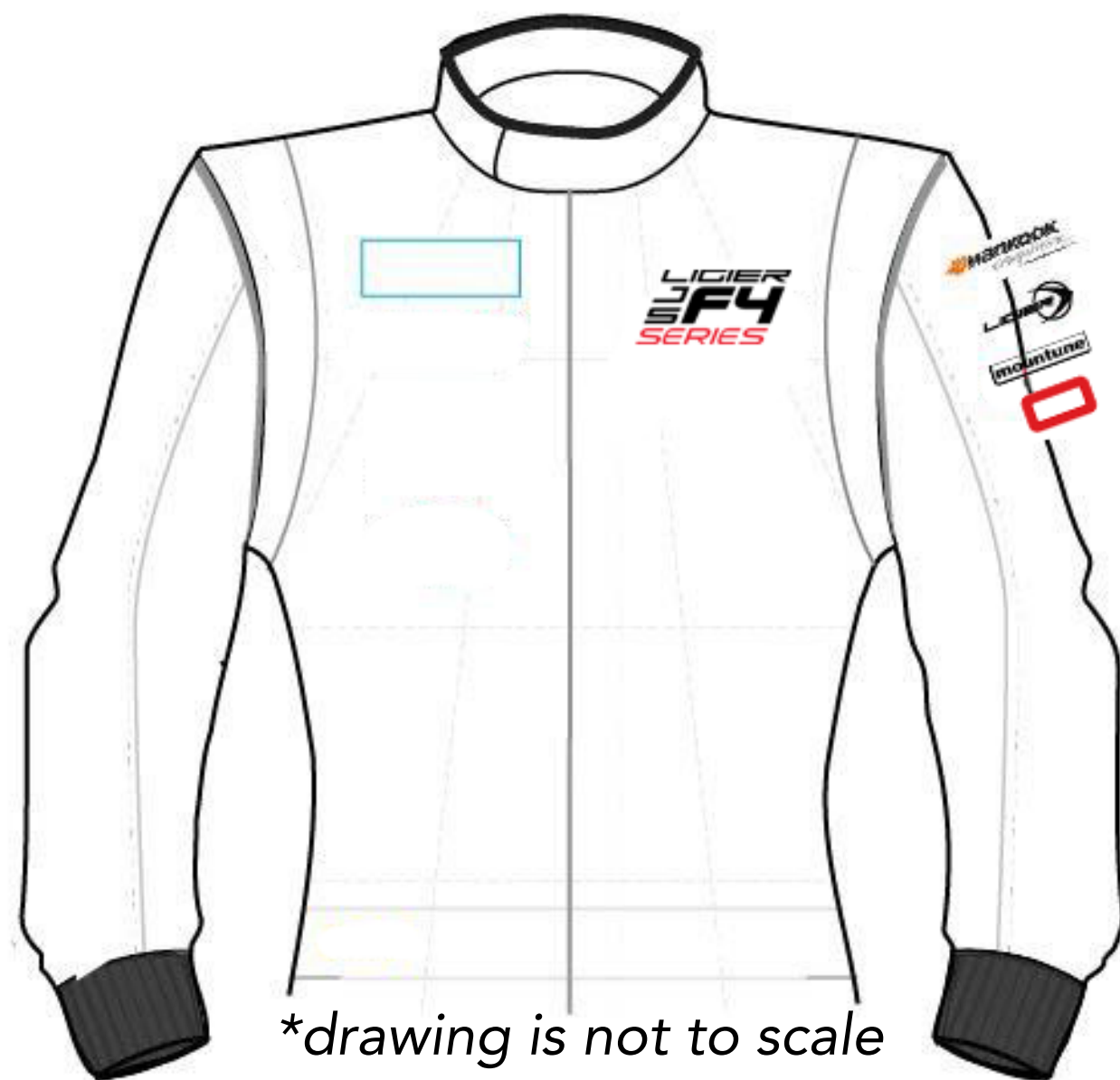
*\*drawing is not to scale*

## NUMBER & NUMBER PLATE

White or black number plate should be in contrast with the chassis color, positioned 3" down from the nose cone connection point. Numbers will be in opposite color, centered on the plate in a large visible font.

## SPONSOR COLUMN

Top of decal sheet should be 10" down from the nose cone connection point.

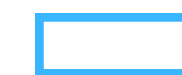


## UPPER LEFT CHEST



Series Logo:  
4.5" wide with the  
height proportionate  
to the logo design

## UPPER RIGHT CHEST



Future Title Sponsor:  
Leave 2" x 4.5"  
space blank

## UPPER LEFT ARM

All logos are 2" tall, width proportionate to the logo design; order top to bottom to be reflected as example to the right.



For dark suits, please use white logos in lieu of black logos featured here. All drivers will receive one (1) suit kit with their driver registration. This suit kit includes all required Series and partner/sponsor logo patches. Drivers are free to have their suits embroidered in lieu of these patches, but layouts require approval. All drivers are required to wear a suit meeting proper branding standards when on the podium. Additional details are outlined in the Sporting Regulations.





*\*drawing is not to scale*

## UPPER LEFT CHEST



Series Logo:  
2.5" tall; width  
proportionate to the  
logo design

## UPPER RIGHT CHEST



Future Title Sponsor:  
Leave 1.5" x 3"  
space blank

## UPPER LEFT ARM

All logos are 1.5" tall, width proportionate to the logo design; order top to bottom to be reflected as example to the right.



For dark shirts, please use white logos in lieu of black logos featured here. All drivers are required to wear a driver shirt during official sessions (practice, qualifying, and races). This shirt can be worn in lieu of a suit at promotional events with the permission of Series officials. Additional details are outlined in the Sporting Regulations.



*\*drawings are not to scale*

## UPPER LEFT CHEST



Series Logo:  
2.5" tall; width  
proportionate to the  
logo design

## UPPER RIGHT CHEST



Future Title Sponsor:  
Leave 2" x 4.5"  
space blank

## UPPER LEFT ARM

All logos are 1.5" tall, width proportionate to the logo design; order top to bottom to be reflected as example to the right.



For dark shirts, please use white logos in lieu of black logos featured here. All crew members over the wall in the pits must be in an official crew shirt. Additional details are outlined in the Sporting Regulations.

# DUAL-CHAMPIONSHIP CREW SHIRT

## UPPER LEFT CHEST



Series Logo:  
2" tall; width  
proportionate to the  
logo design; order top  
to bottom to be  
reflected as shown in  
examples to the right.

## UPPER RIGHT CHEST



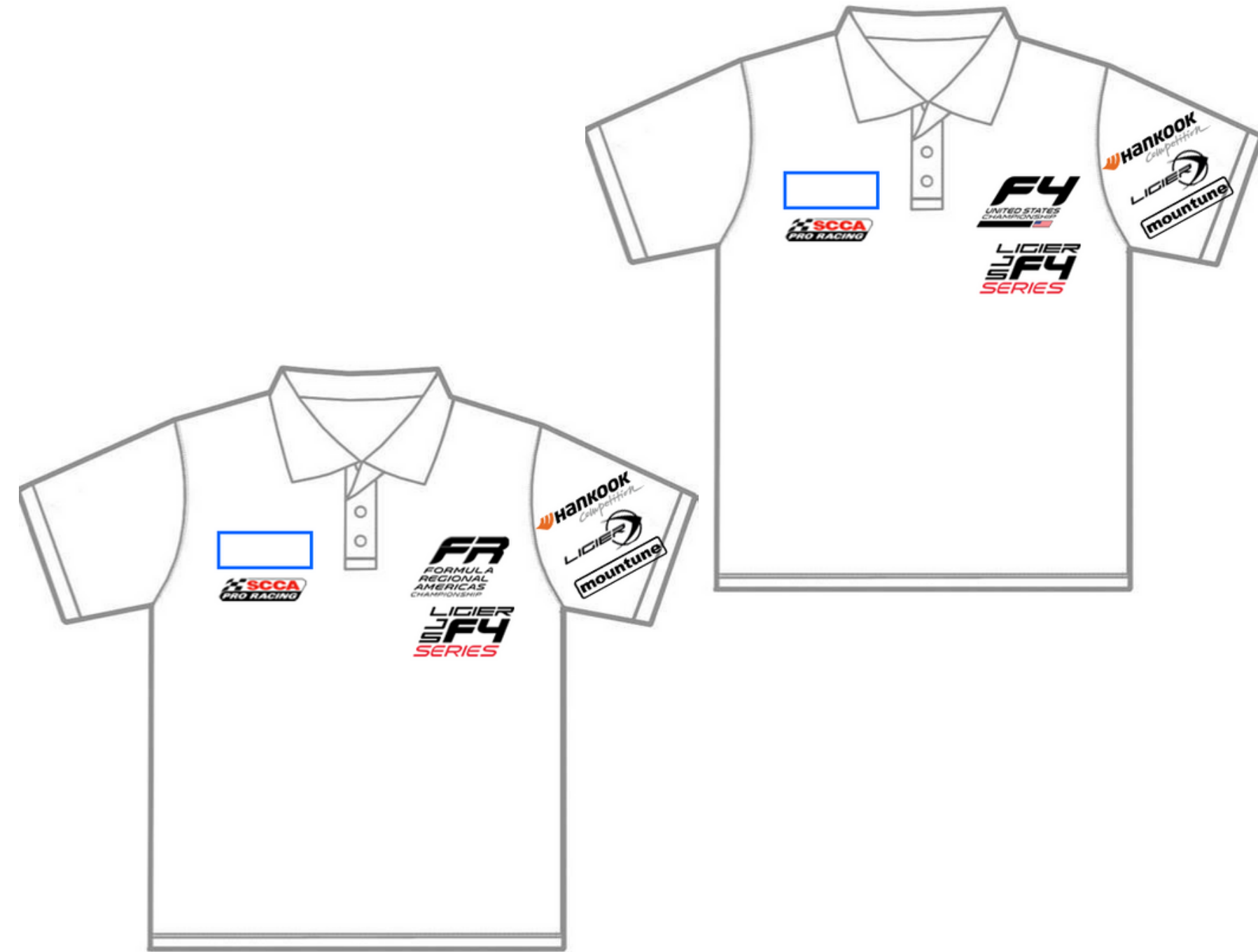
Future Title Sponsor:  
Leave 2" x 4.5"  
space blank



SCCA Pro Logo:  
1.5" x 3"

## UPPER LEFT ARM

All logos are 1.5" tall, width proportionate to the logo design; order top to bottom to be reflected as example to the right.



*\*drawings are not to scale*

For dark shirts, please use white logos in lieu of black logos featured here. All crew members over the wall in the pits must be in an official crew shirt. Additional details are outlined in the Sporting Regulations.

# TRI-CHAMPIONSHIP CREW SHIRT



\*drawings are not to scale

## UPPER LEFT CHEST



Series Logos:  
1.5" tall; width  
proportionate to the  
logo design; order top  
to bottom to be  
reflected as shown in  
example to the right.



## UPPER RIGHT CHEST



Future Title Sponsor:  
Leave 2" x 4.5"  
space blank



SCCA Pro Logo:  
1.5" x 3"

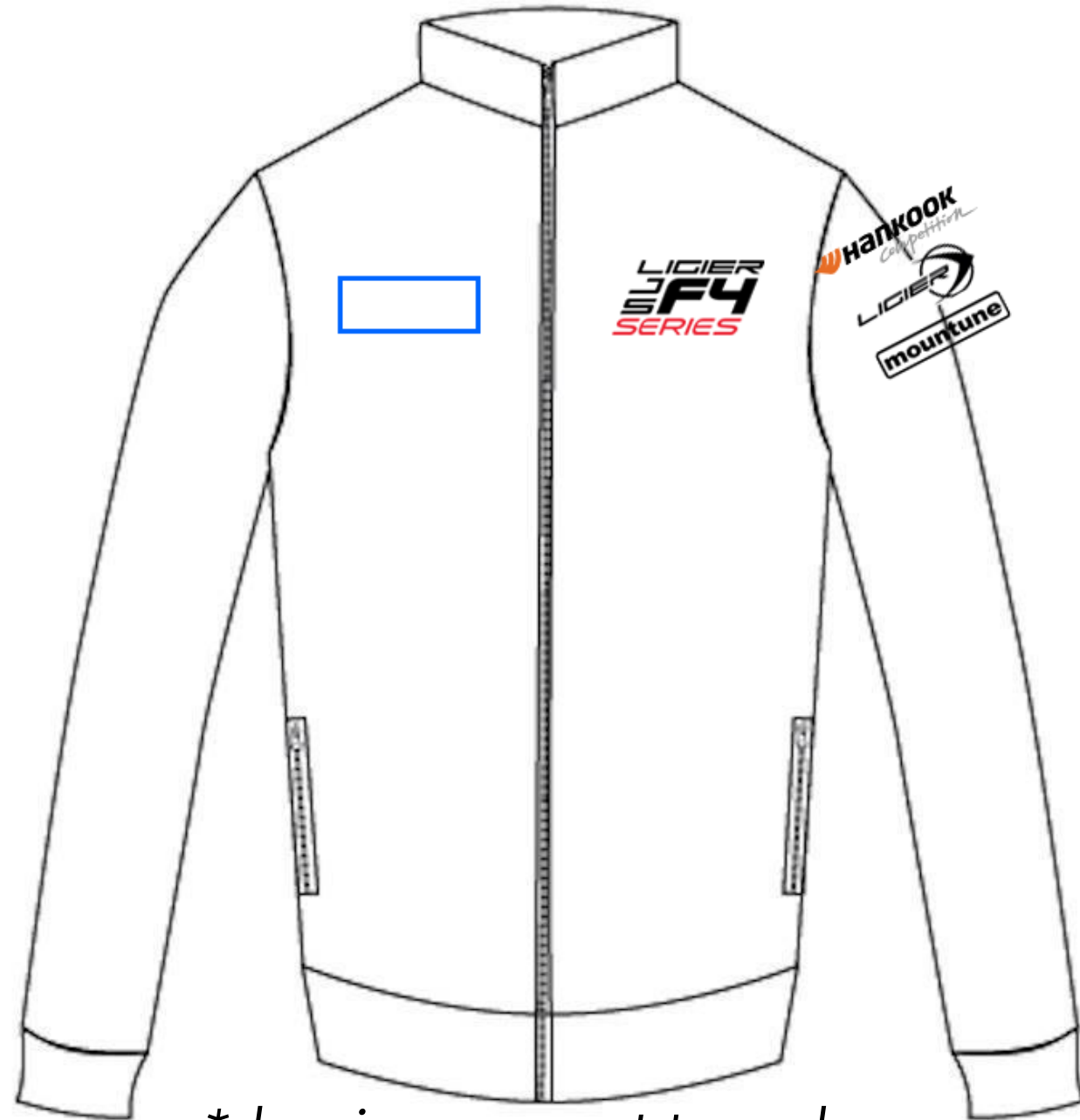
## UPPER LEFT ARM

All logos are 1.5" tall, width proportionate to the logo design; order top to bottom to be reflected as example to the right.



For dark shirts, please use white logos in lieu of black logos featured here. All crew members over the wall in the pits must be in an official crew shirt. Additional details are outlined in the Sporting Regulations.

# CREW JACKET



\*drawings are not to scale

## UPPER LEFT CHEST



Series Logo:  
2.5" tall; width  
proportionate to the  
logo design

## UPPER RIGHT CHEST



Future Title Sponsor:  
Leave 2" x 4.5"  
space blank

## UPPER LEFT ARM

All logos are 1.5" tall, width proportionate to the logo design; order top to bottom to be reflected as example to the right.



For dark shirts, please use white logos in lieu of black logos featured here. All crew members over the wall in the pits must be in an official crew shirt. Additional details are outlined in the Sporting Regulations.



*\*drawings are not to scale*

## UPPER LEFT CHEST



Series Logo:  
2" tall; width  
proportionate to the  
logo design; order top  
to bottom to be  
reflected as shown in  
examples to the right.

## UPPER RIGHT CHEST



Future Title Sponsor:  
Leave 2" x 4.5"  
space blank



SCCA Pro Logo:  
1.5" x 3"

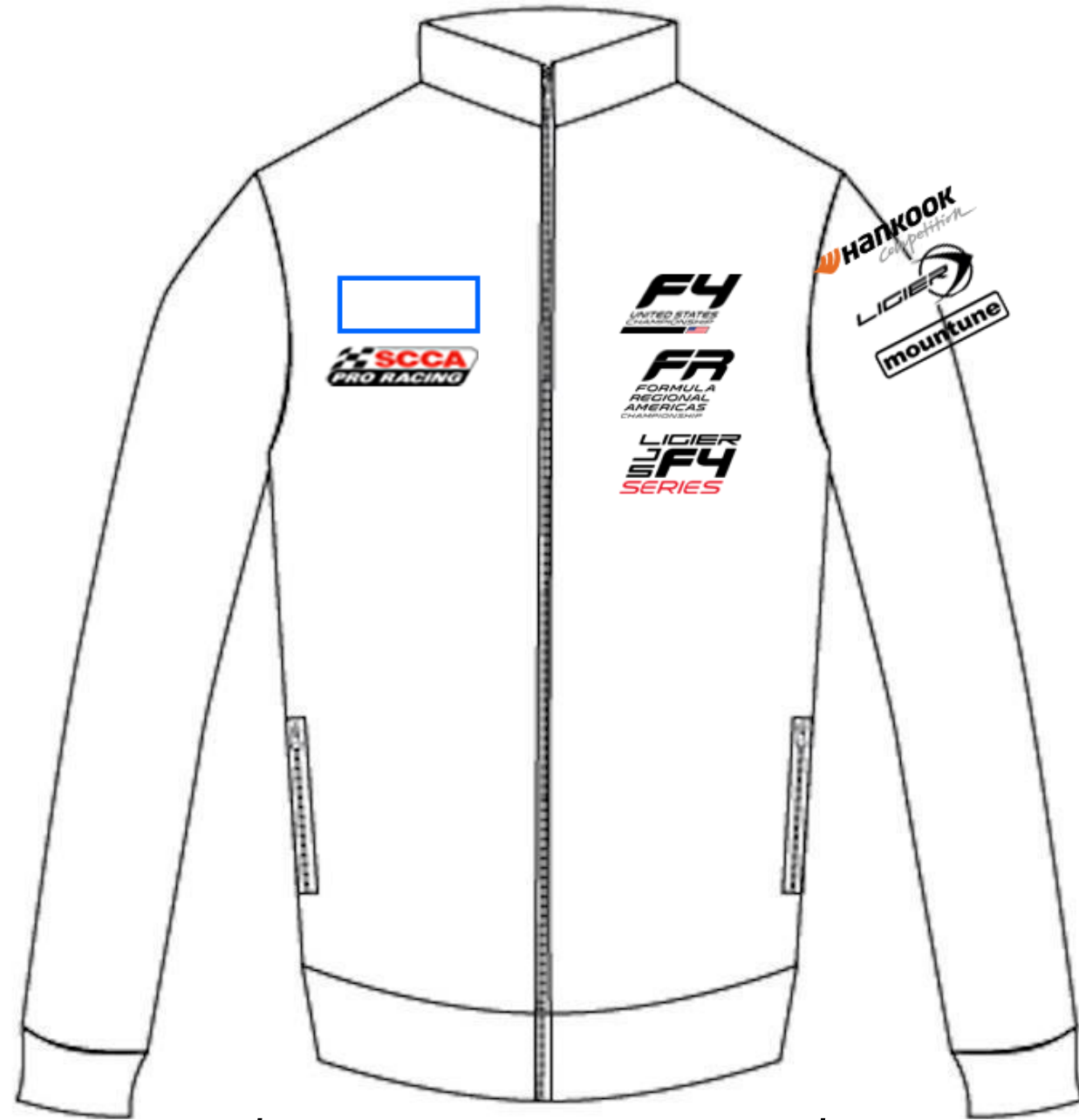
## UPPER LEFT ARM

All logos are 1.5" tall, width proportionate to the logo design; order top to bottom to be reflected as example to the right.



For dark shirts, please use white logos in lieu of black logos featured here. All crew members over the wall in the pits must be in an official crew shirt. Additional details are outlined in the Sporting Regulations.

# TRI-CHAMPIONSHIP CREW JACKET



\*drawings are not to scale

## UPPER LEFT CHEST



Series Logos:  
1.5" tall; width proportionate to the logo design; order top to bottom to be reflected as shown in example to the right.



## UPPER RIGHT CHEST



Future Title Sponsor:  
Leave 2" x 4.5" space blank



SCCA Pro Logo:  
1.5" x 3"

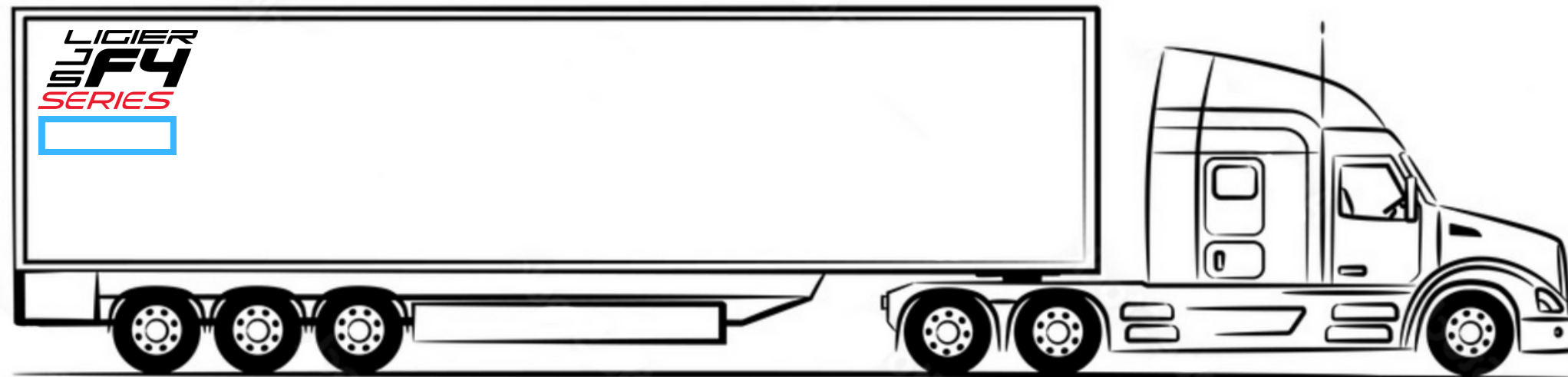
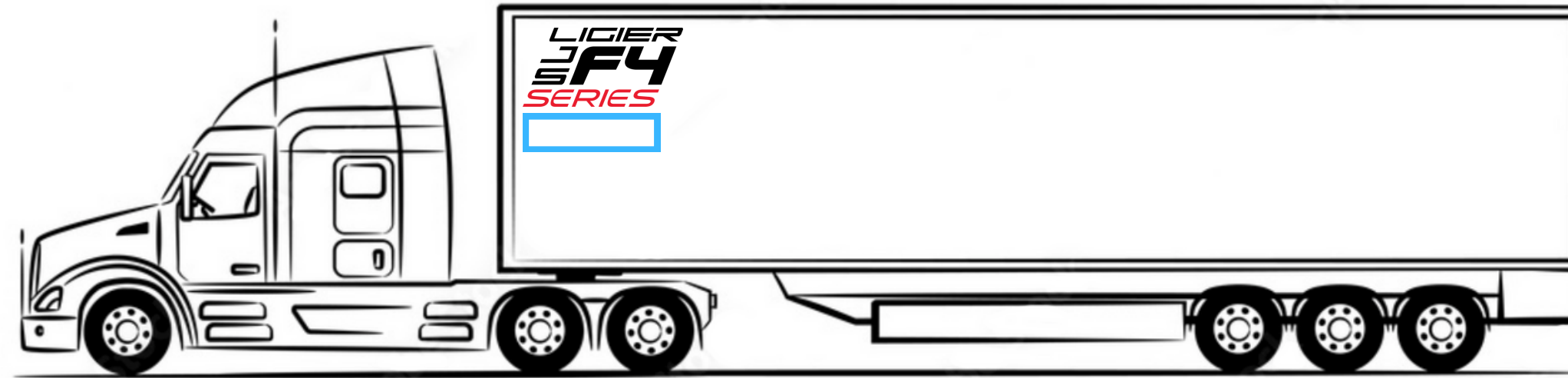
## UPPER LEFT ARM

All logos are 1.5" tall, width proportionate to the logo design; order top to bottom to be reflected as example to the right.



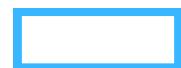
For dark shirts, please use white logos in lieu of black logos featured here. All crew members over the wall in the pits must be in an official crew shirt. Additional details are outlined in the Sporting Regulations.

# TEAM TRANSPORTER



## DRIVER'S SIDE

Series Logo: 3' tall; width proportionate to the logo design

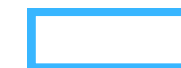


Future Title Sponsor: Leave 2'x4' space blank

Location of logos should be at the front of the trailer.

## PASSENGER'S SIDE

Series Logo: 3' tall; width proportionate to the logo design



Future Title Sponsor: Leave 2'x4' space blank

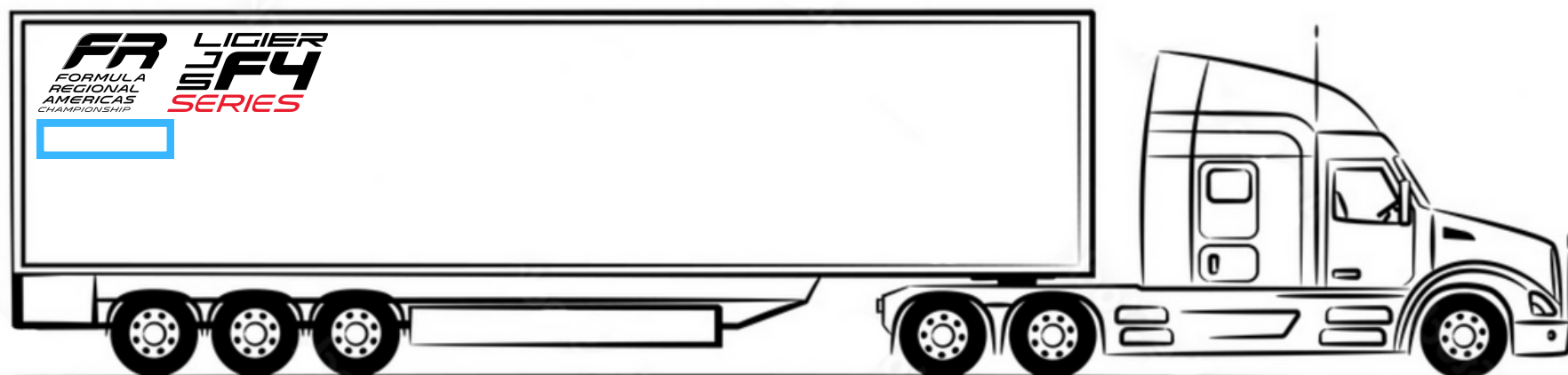
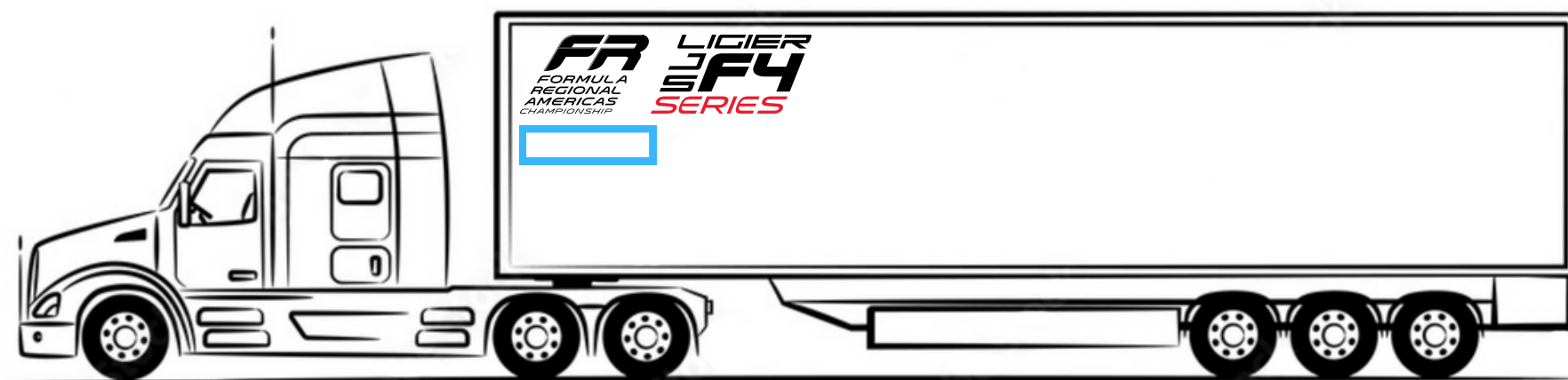
Location of logos should be at the rear of the trailer.

Teams will be provided with a Series logos for their trailers if they aren't currently featured.

Please connect with [Kelley Huxtable \(frf4registration@parellamotorsports.com\)](mailto:frf4registration@parellamotorsports.com) to obtain yours.

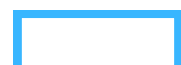
Teams should make every effort possible to not feature conflicting logos with our primary sponsors/partners: Hankook and Ligier.





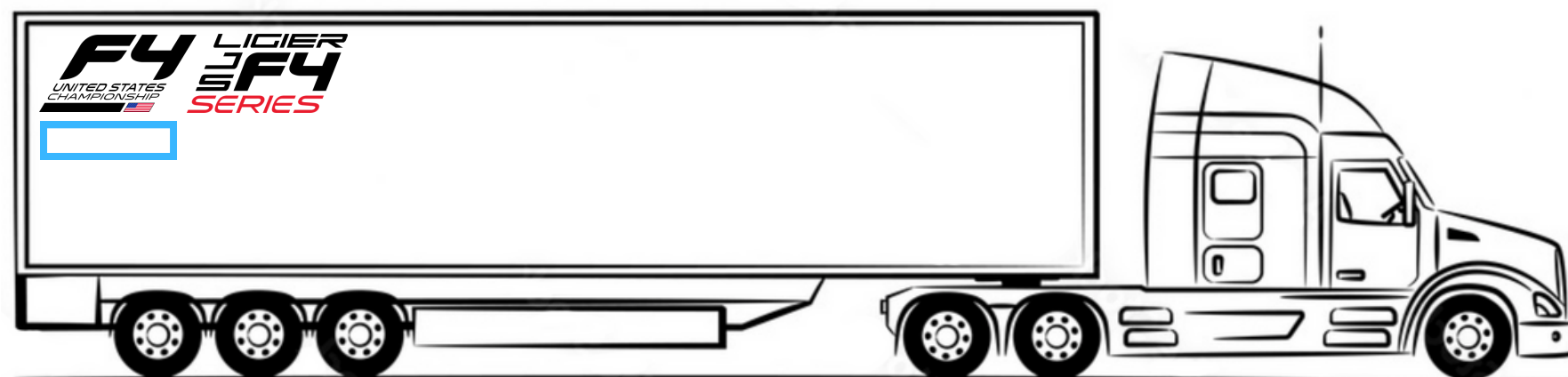
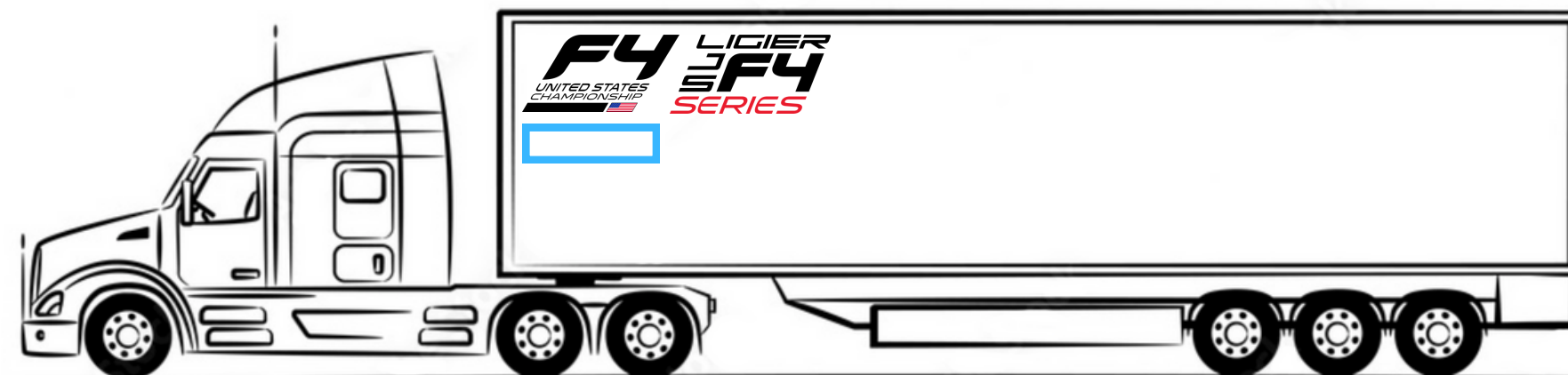
## DRIVER'S SIDE

Series Logos: 3' tall; width proportionate to the logo design



Future Title Sponsor: Leave 2'x4' space blank

Location of logos should be at the front of the trailer.



## PASSENGER'S SIDE

Series Logos: 3' tall; width proportionate to the logo design



Future Title Sponsor: Leave 2'x4' space blank

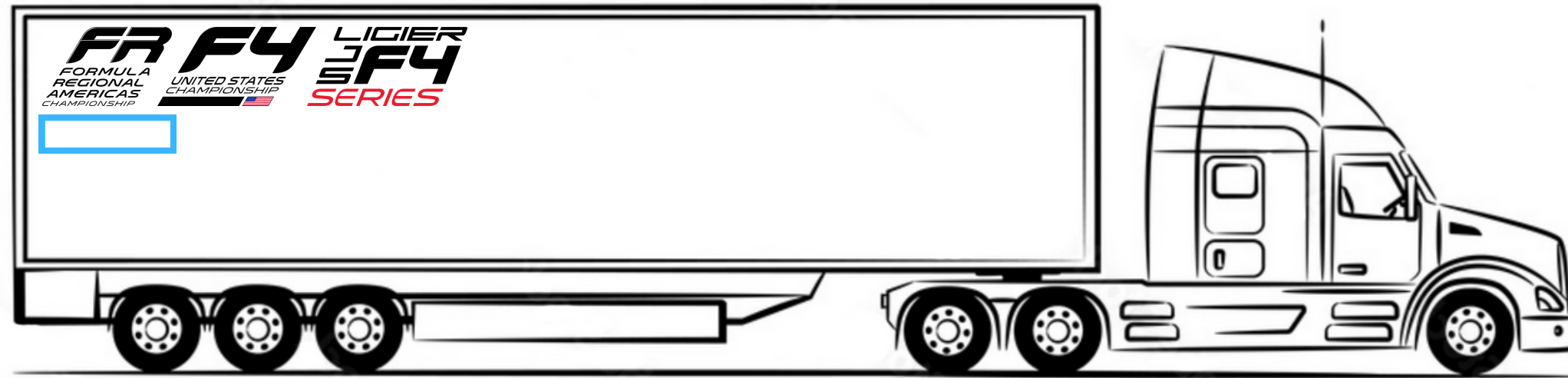
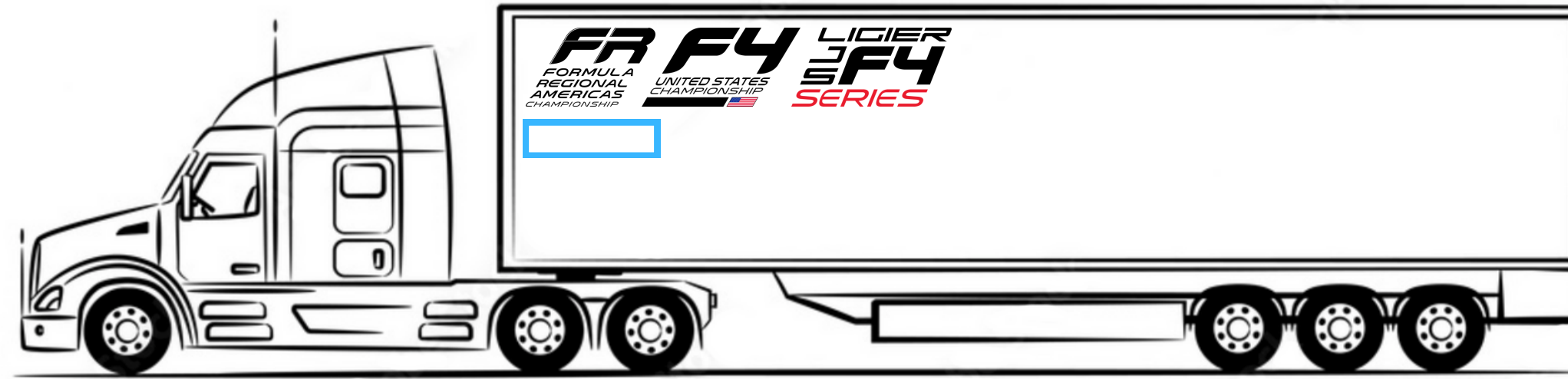
Location of logos should be at the rear of the trailer.

Teams will be provided with a Series logos for their trailers if they aren't currently featured.

Please connect with [Kelley Huxtable \(frf4registration@parellamotorsports.com\)](mailto:frf4registration@parellamotorsports.com) to obtain yours.

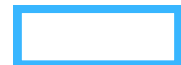
Teams should make every effort possible to not feature conflicting logos with our primary sponsors/partners: Hankook and Ligier.

# TRI TEAM TRANSPORTER



## DRIVER'S SIDE

Series Logos: 3' tall; width proportionate to the logo design



Future Title Sponsor: Leave 2'x4' space blank

Location of logos should be at the front of the trailer.

## PASSENGER'S SIDE

Series Logos: 3' tall; width proportionate to the logo design



Future Title Sponsor: Leave 2'x4' space blank

Location of logos should be at the rear of the trailer.

Teams will be provided with a Series logos for their trailers if they aren't currently featured.

Please connect with [Kelley Huxtable \(frf4registration@parellamotorsports.com\)](mailto:frf4registration@parellamotorsports.com) to obtain yours.

Teams should make every effort possible to not feature conflicting logos with our primary sponsors/partners: Hankook and Ligier.